



# MONTHLY MEMBERSHIP PROGRESS REPORT

District 22 A

Results as of: 5/31/2017

GMT: ED LECIUS

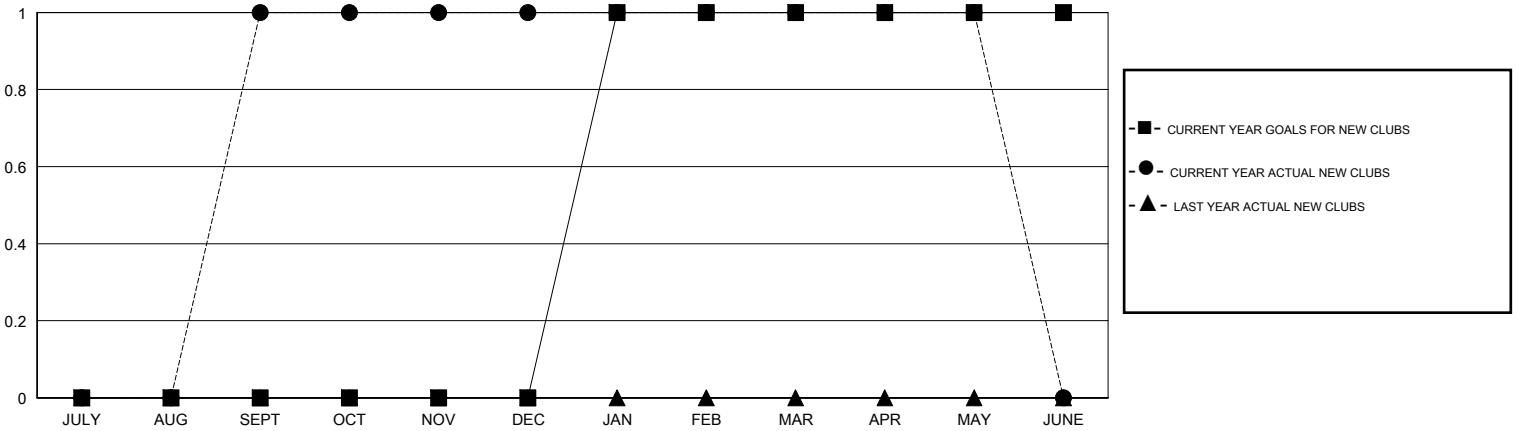
LOCATION MARYLAND

GMT CA

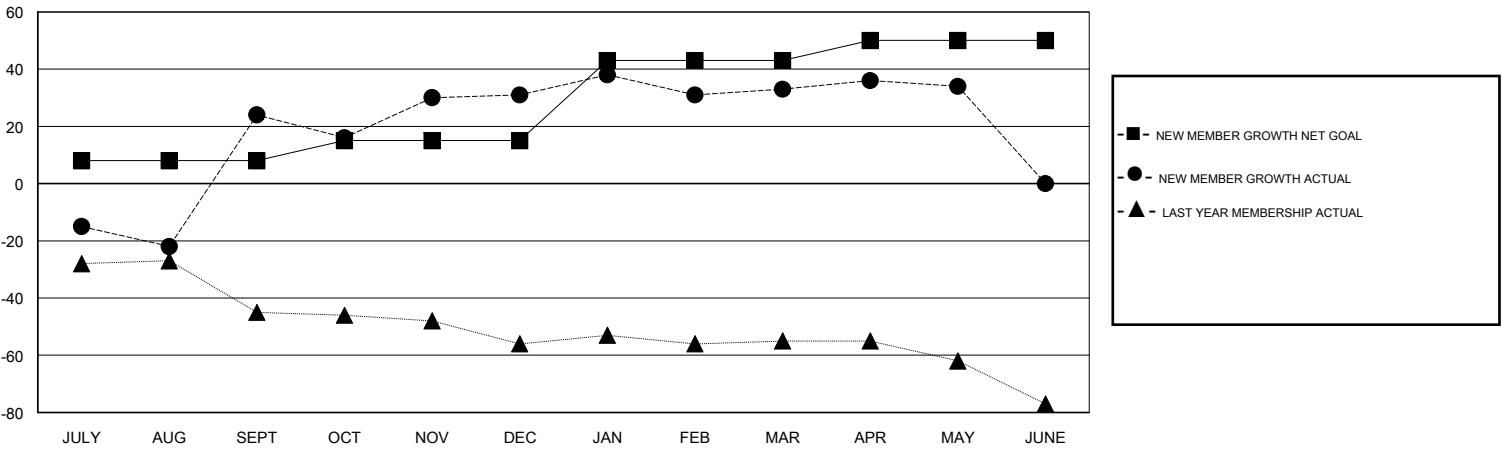
Clubs			
RESULTS FOR 2016-2017			
QUARTER	NEW CLUB GOAL	NEW CLUBS	DROPPED CLUBS
JULY/AUG/SEPT	0	1	0
OCT/NOV/DEC	0	0	0
JAN/FEB/MAR	1	0	0
APR/MAY/JUNE	0	0	0

Members			
RESULTS FOR 2016-2017			
QUARTER	NEW MEMBER GROWTH NET GOAL (not reinstated or transfers)	NEW MEMBER GROWTH ACTUAL (not reinstated or transfers)	DROPPED MEMBERS ACTUAL (including transfers)
JULY/AUG/SEPT	8	59	35
OCT/NOV/DEC	7	25	18
JAN/FEB/MAR	28	24	22
APR/MAY/JUNE	7	11	10

GOALS AND ACTUAL NEW CLUBS CUMULATIVE



GOALS AND ACTUAL MEMBERS CUMULATIVE



DROPPED CLUBS: 0	21 CLUBS OF 30 ADDED 1 OR MORE NEW MEMBERS	<u>GENDER DISTRIBUTION</u>	
DROPPED MEMBERS		MALE	552 (65.17%)
DECEASED	22	FEMALE	295 (34.83%)
CLUB CANCELLED	0	TOTAL FAMILY UNIT MEMBERS	147
OTHER	62	FAMILY MEMBERS PAYING HALF DUES	77
TOTAL	84	<a href="#">CLICK HERE FOR CUMULATIVE MEMBERSHIP DATA</a>	